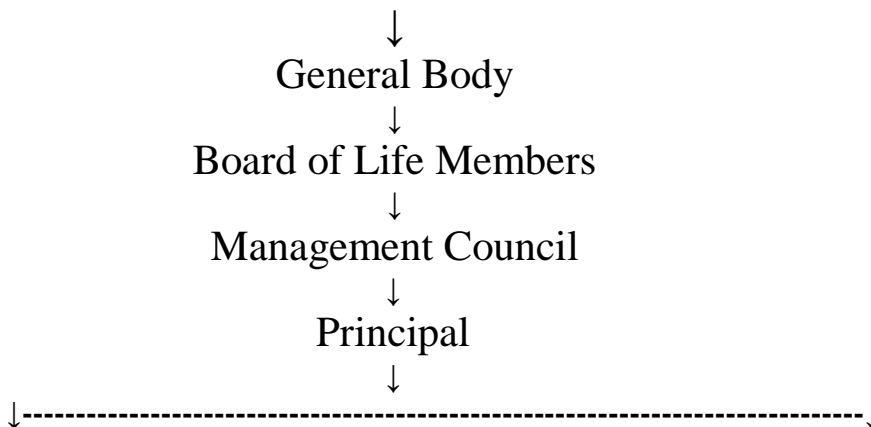


**Shri Swami Vivekanand Shikshan Sanstha, Kolhapur** is the apex management body of this college. It consists...

## ORGANIZATIONAL STRUCTURE

Shri Swami Vivekanand Shikshan Sanstha, Kolhapur



<b>Administrative Committees</b>	<b>Academic Committees</b>
<ul style="list-style-type: none"> <li>➤ CDC</li> <li>➤ Students' Council</li> <li>➤ Standing Committee</li> <li>➤ Purchase Committee</li> <li>➤ Internal Complaints Committee</li> <li>➤ Anti-Ragging Committee</li> <li>➤ Discipline Committee</li> <li>➤ Admission Committee</li> <li>➤ Hostel committee</li> <li>➤ Grievance Redressal Cell</li> <li>➤ Development Fund Planning Committee</li> </ul>	<ul style="list-style-type: none"> <li>➤ IQAC</li> <li>➤ Various Departments</li> <li>➤ Library Committee</li> <li>➤ Research Committee</li> <li>➤ NCC and NSS Committees</li> <li>➤ Examination committee</li> <li>➤ Magazine Committee</li> <li>➤ Cultural Activities Committee</li> <li>➤ Placement Cell</li> <li>➤ Lead College Activities Committee</li> <li>➤ Literary Associations</li> </ul>

On an average the above committees meet on beginning and end of a year. The decisions are taken in the meetings of the respective bodies, and their execution is monitored by the Principal, and the review of the work done is taken in the term end and year end meetings.