



“ज्ञान, विज्ञान आणि सुसंस्कार यांसाठी शिक्षण प्रसार” - शिक्षणमहर्षी डॉ. बापूजी साळुंखे

Shri Swami Vivekanand Shikshan Sanstha, Kolhapur's

KAKASAHEB CHAVAN COLLEGE,

Talmavale, Tal. Patan, Dist. Satara



Affiliated to Shivaji University, Kolhapur
Assessment and Accreditation Process

Criterion I
Curricular Aspects

Key Indicator - 1.4
Feedback System

QnM 1.4.1

**1.4.1 Institution obtains feedback on the
academic performance and ambience of the
institution from various stakeholders**

**Analysis of Students
Feedback
2018-19**

“ज्ञान, विज्ञान आणि सुसंस्कार यांसाठी शिक्षणप्रसार”

- शिक्षणमहर्षी डॉ. बापूजी साळुंखे

Shri Swami Vivekanand Shikshan Sanstha, Kolhapur's

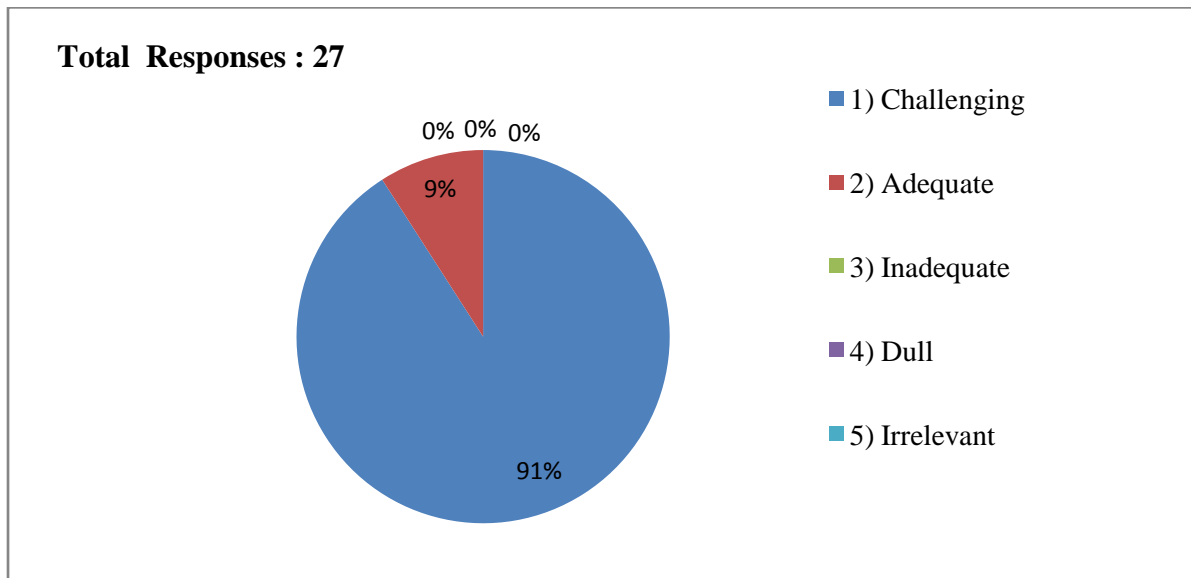
Kakasaheb Chavan College, Talmavale

Tal. Patan, Dist. Satara.

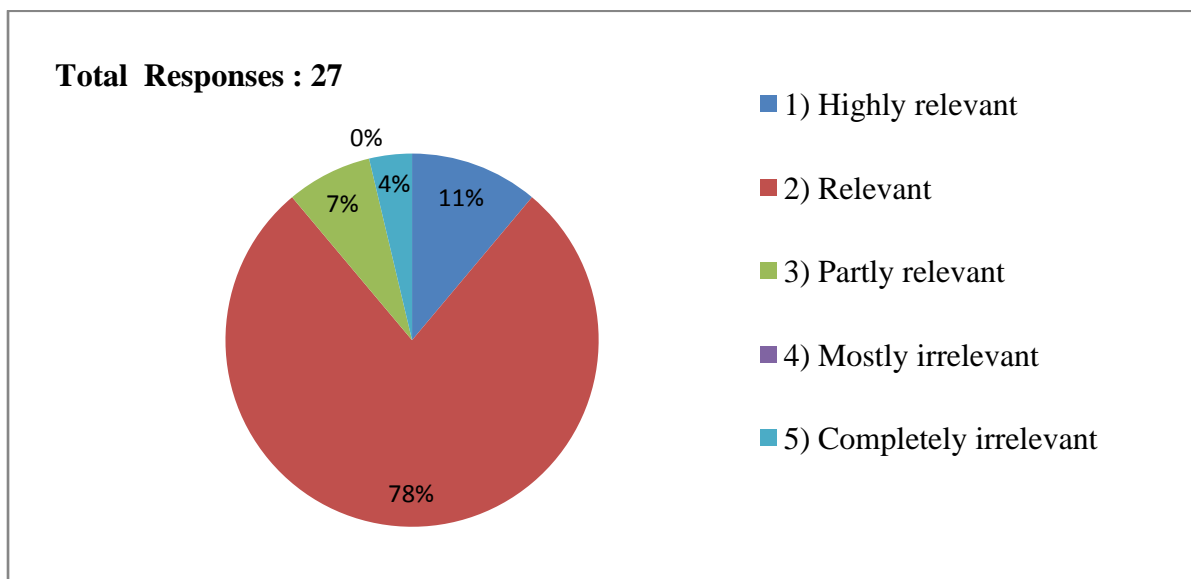
Analysis of Students feedback

2018-19

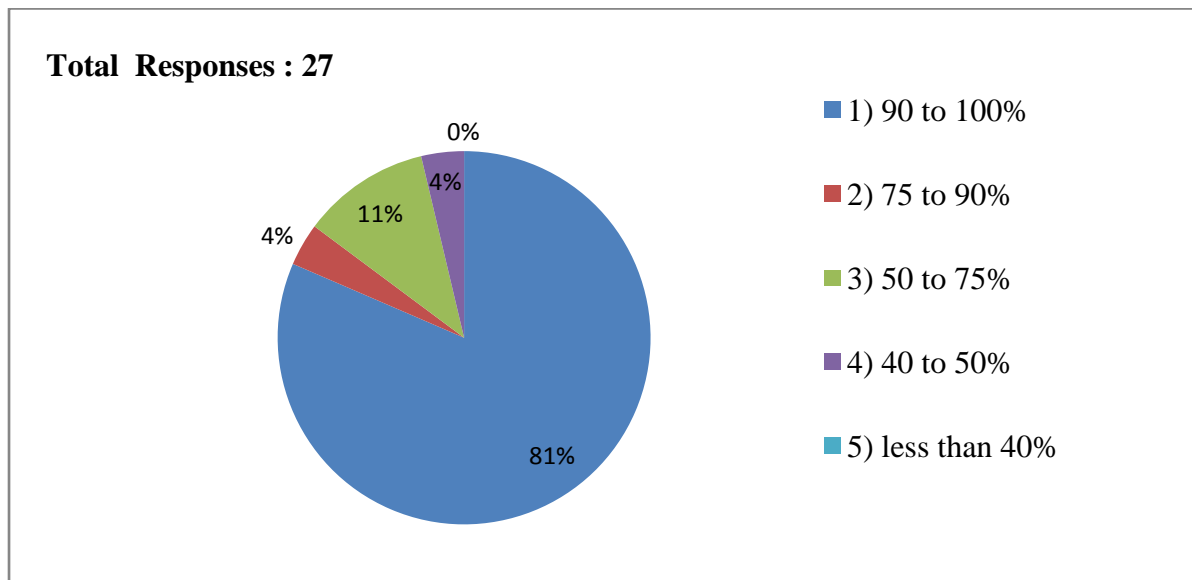
1. The syllabus was...



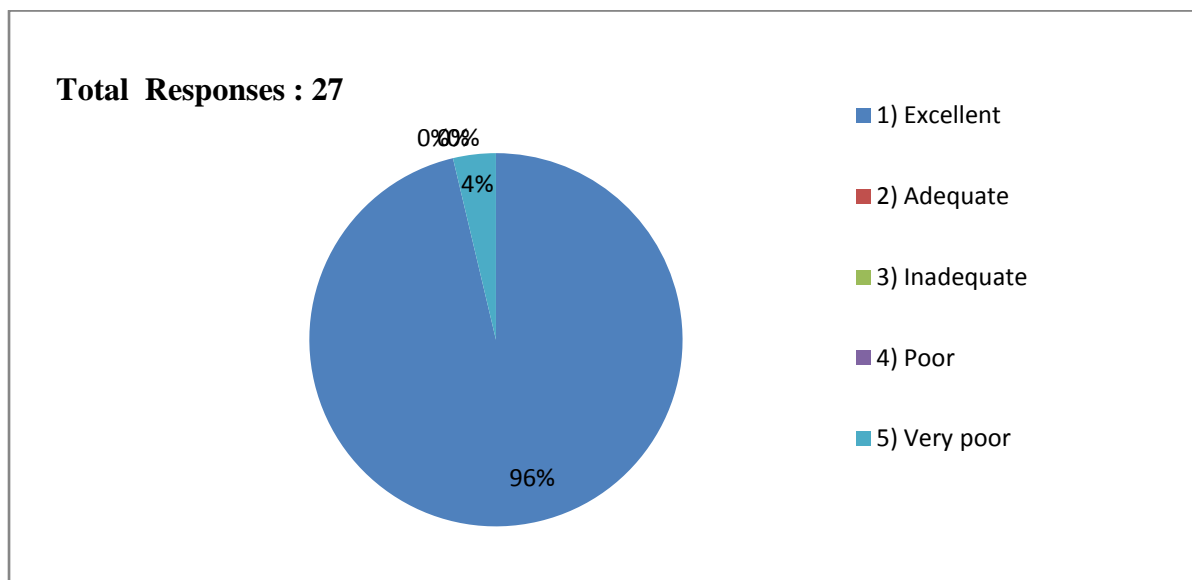
2. Your background for benefiting from the course was



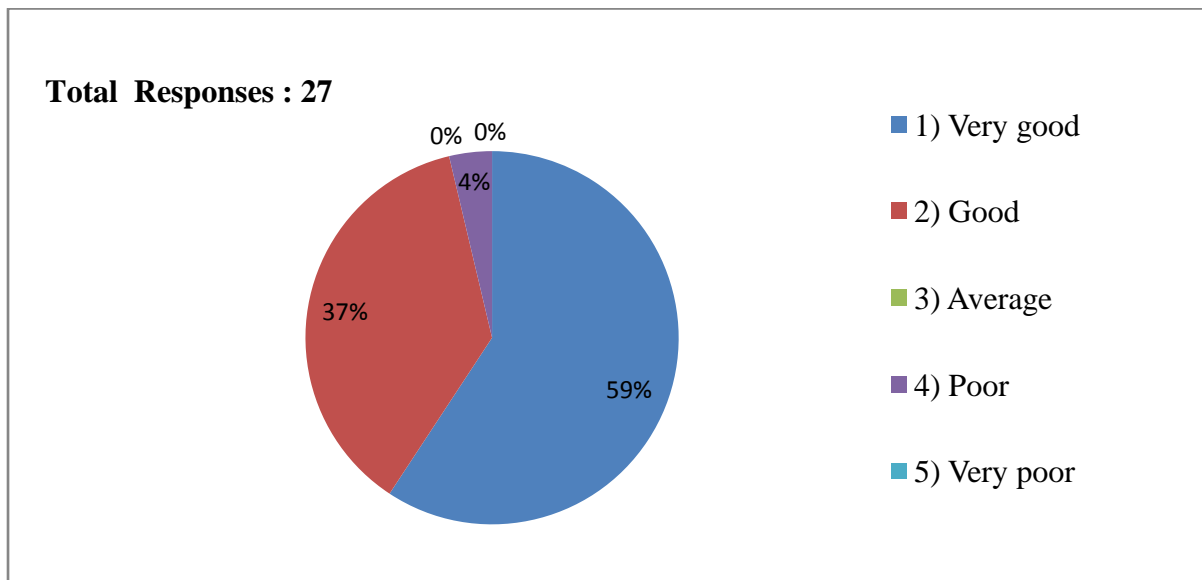
3. How much of the syllabus was taught in class?



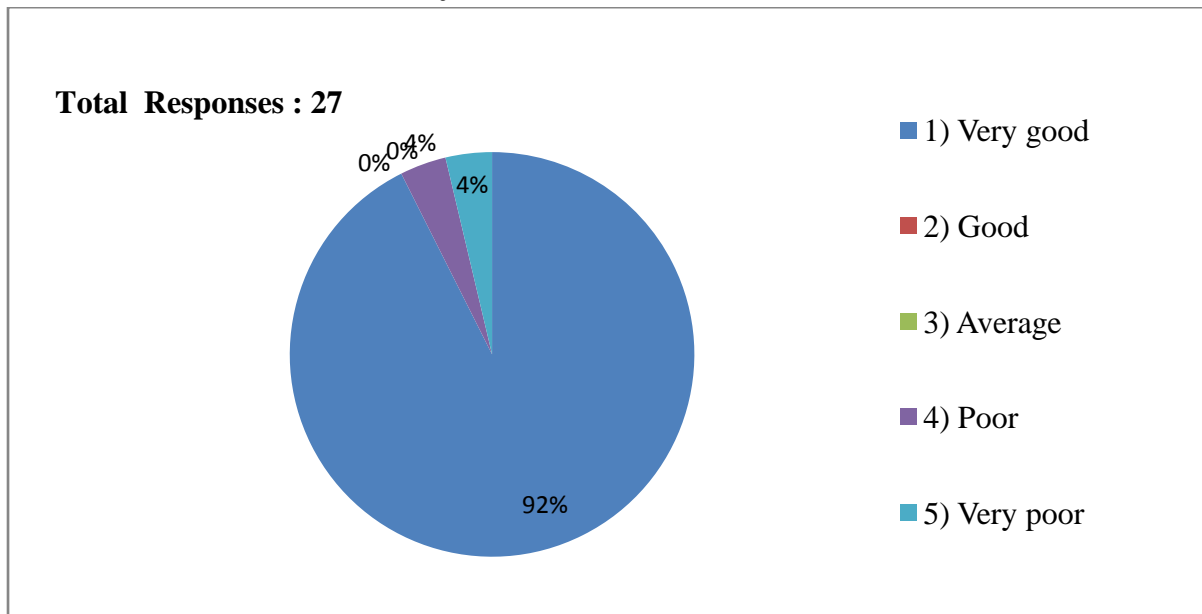
4. What is your opinion about the library facilities for the course?



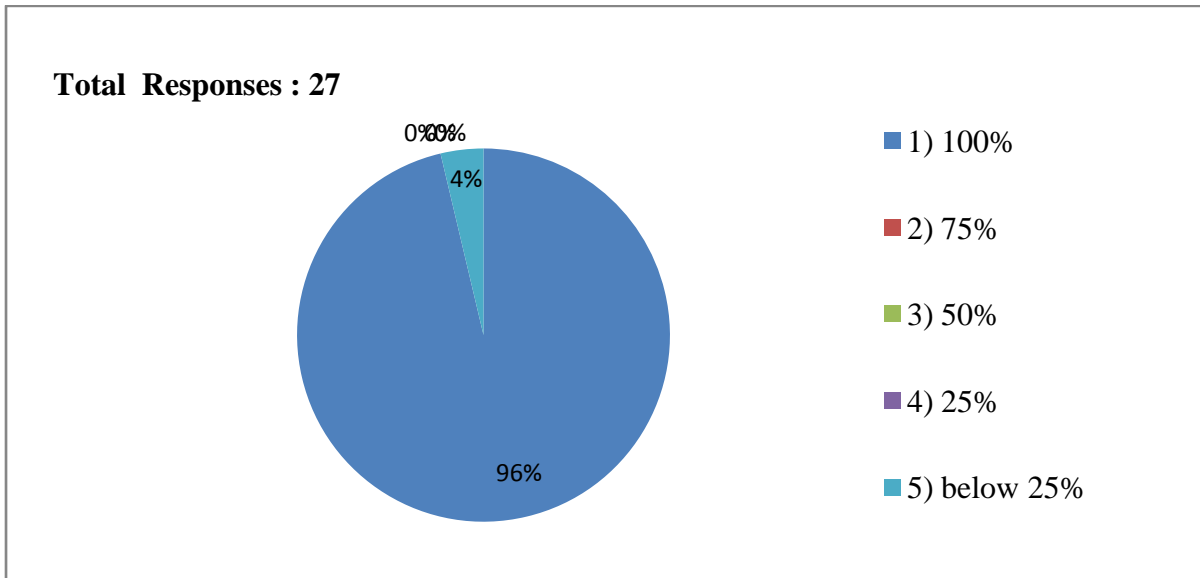
5. Were you able to get the prescribed readings?



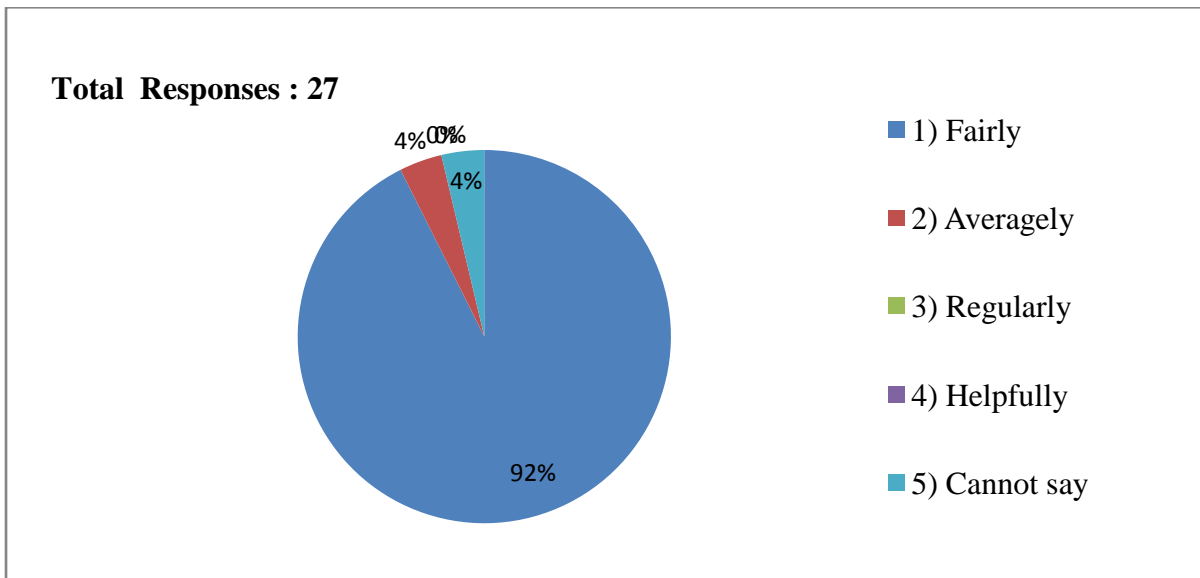
6. The internal evaluation system is...



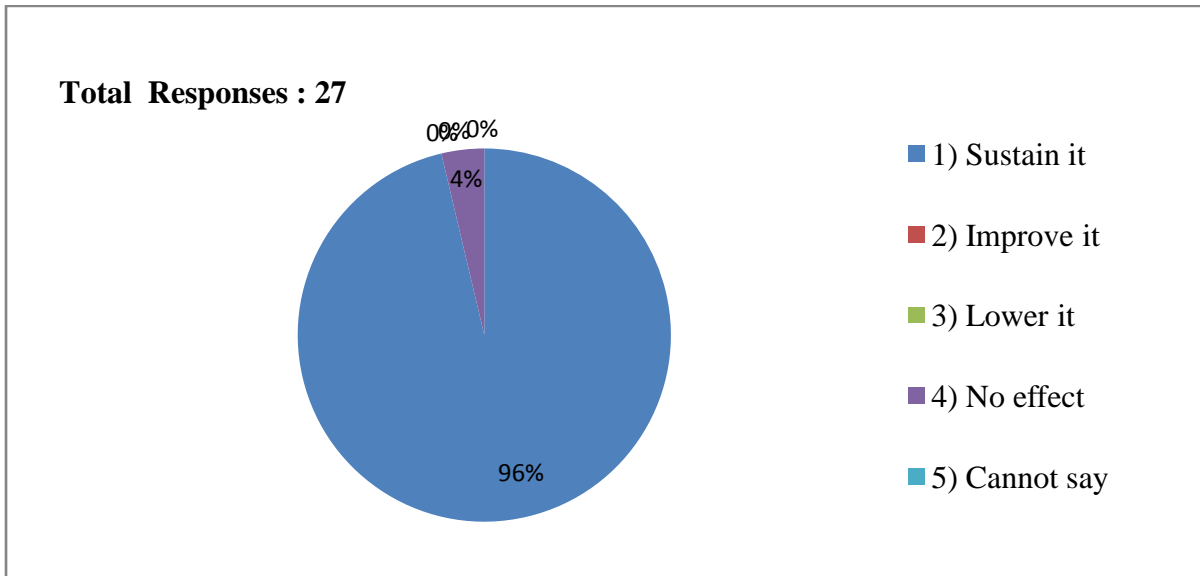
7. In your opinion, how much of the total weight-age of a course should be given for the internal assessment?



8. Did the internal assessment work?



9. What effect do you think the internal assessment will have on your course grade?



10. How did the teachers provide feedback on your performance?

